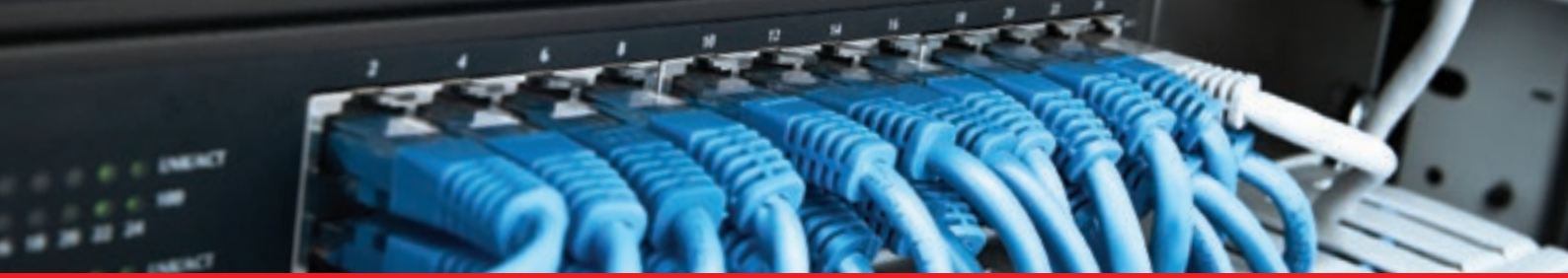


FR5 FRANKFURT WEST IBX DATA CENTER



ABOUT

Equinix, Inc. (Nasdaq: EQIX) connects the world's leading businesses to their customers, employees and partners inside the most interconnected data centers. In 33 markets across five continents, Equinix is where companies come together to realize new opportunities and accelerate their business, IT and cloud strategies. In a digital economy where enterprise business models are increasingly interdependent, interconnection is essential to success. Equinix operates the only global interconnection platform, sparking new opportunities that are only possible when companies come together.

This is one of many state of the art IBX centers in key metropolitan areas throughout Europe that offer a full range of premium colocation, interconnection and support services to a wide range of secure digital ecosystems built by networks, enterprise, content, cloud and IT services companies and financial institutions.

LOCATION

Kleyerstraße 90
60326 Frankfurt
Germany

From Airports – 8.1 mi (13 km) to Frankfurt Main Airport (FRA)

Location Orientation – 2.1 mi (3.4 km) to FR4 Frankfurt West Equinix Data Center;

3.2 mi (5.2 km) to central Frankfurt

Parking - On-site parking is available

PROFILE

Phone - +49 69 920 317 100

Email - germany@eu.equinix.com

Square Footage Breakdown

Gross	37,673 ft² (3,500 m²)
Colocation Area	22,604 ft² (2,100 m²)

GLOBAL SLA

- 99.999+% Power availability
- 99.99+% Temperature and Humidity availability
- 99.99+% Cross Connect availability

POWER

Electrical Capacity – 0.8kVA/ m²

UPS Configuration – 1.8 MVA UPS

UPS Topology – N+N configuration

Utility Voltage – 3 MVA

Standby Power – 4.1 MVA generator capacity

Standby Power Config. – N

COOLING

Cooling Capacity – 3 MW

Cooling Topology – N+1 configuration

SECURITY

Human – 24x7 security guards

Electronic – CCTV coverage of all internal and external areas, access control system and motion detectors

FR5 FRANKFURT WEST IBX DATA CENTER

BUILDING

- Building Type** – Concrete structure
- Raised Floor Height** – 0.3 m
- Floor Load Capacity** – 0.5 t / m²
- Floor Type** – Earth conductor
- 600 mm x 600 mm anti-static steel tiles
- Raised Floor to Ceiling** – 2.6 m

SIGNIFICANT BUILDING DATES

- Base Building Constructed** – 1924
- Refurbishment to Datacenter** – 1999
- Latest Update** – 2012

FIRE PROTECTION

- Fire Suppression** – Multiple zoned aspiration system (FM 200 & Novec 1230)

INTERCONNECTION OPTIONS

AVAILABLE

- System** – Overhead proprietary cable tray
- Cross Connects** – Single-Mode fiber, Multi-Mode fiber (62.5 and 50 micron), CAT7, CAT6, CAT5 (T1), and CAT3 (POTS),
- Campus Cross Connects** – Extends choice and reach for customers of FR5 to FR4
- DE-CIX Partner Exchange** – Central switch for public and private peering offering
- Ethernet Exchange/VMMR-E** – Enables Ethernet Service Providers to interconnect to CENs and expand the reach of Ethernet services

Additional Voice and data interconnection options available

EQUINIX IBX DATA CENTER LOCATIONS

Located in 33 strategic markets across the Americas, EMEA, and Asia-Pacific.

